

Increased performance through digital tuning

X4JET plus



- Connection of up to 4 printheads
- Connection options for HP, Lexmark and Trident printheads (individually or in combination)
- Stand alone system with 5.7" TFT display and full keyboard
- Design of layouts possible via keyboard or iDesign software
- Animated graphics for simple operation
- 2-channel version for marking packaging on two independent production lines with different print starts and speeds
- Own multi-tasking operating system



The Markoprint systems offer you future-proof printing solutions: the variable configuration options make provision not only for today's coding demands, but also for those of tomorrow.

Every Markoprint printer is designed to optimally adapt to the demands of a specific task. This means: only those components that are actually necessary are in use. The configuration is flexible, at all times allowing adaptation to the specific requirements of the application.

These innovative upgrade options allow simple and fast adaptation to meet any new demand.

iJET



- Independently operating HP technology printing system
- Printhead and controller as one system
- High speed functionality up to 180 m/min at 300 dpi
- Click 'n Print cartridge holder for fast cartridge change
- iLogic input unit for system set-up and input of variables
- OLED display to show parameters and variables
- Reflex sensor integrated in the deflector
- PoE (Power over Ethernet) with M12 industrial plug connector (one plug for both power supply and data transfer)
- Own multi-tasking operating system
- Display swiveling 180° for Top application
- Animated graphics for simple operation
- Innovative design



	Configurations	X1JET HP / X1JET MX / X1JET LX				iJET				X2JET plus / X4JET / X4JET plus	
		Print	Basic	Advanced	Pro	Print	Basic	Advanced	Pro	Advanced	Pro
Max. print speed [m/min]* HP (Hewlett Packard) MX (Trident) LX (Lexmark)		30 30 30	30 30 30	60 60 60	90 90 90	60	30	90	High-Speed 180	90 200 90	High-Speed 180 200 240
Max. resolution in dpi - horizontal - vertical		50 to 900 HP+Lexmark: 300 Trident: 192	50 to 900 HP+Lexmark: 300 Trident: 192	50 to 900 HP+Lexmark: 300/600 Trident: 192	50 to 900 HP+Lexmark: 300/600 Trident: 192	50 to 900 300 / 600	50 to 900 300 / 600	50 to 900 300 / 600	50 to 900 300 / 600	50 to 900 HP+Lexmark: 300/600 Trident: 192	50 to 900 HP+Lexmark: 300/600 Trident: 192
Max. text length [m]		1	1	1	2	2	2	2	6	2	6
Text field		●	●	●	●	●	●	●	●	●	●
Counter		—	—	●	●	●	—	●	●	●	●
Time		—	●	●	●	●	●	●	●	●	●
Date field		—	●	●	●	●	●	●	●	●	●
Date offset		—	—	●	●	●	—	●	●	●	●
Logo		●	●	●	●	●	●	●	●	●	●
Variable		—	—	—	—	●	—	●	●	●	●
Active fields		—	—	●	●	—	—	●	●	●	●
Barcodes		—	—	●	●	—	—	●	●	●	●
2D codes		—	—	—	●	—	—	●	●	●	●
Data transfer by USB stick		●	●	●	●	—	—	●	●	●	●
Ethernet		●	●	●	●	—	●	●	●	●	●
EIA232		●	●	●	●	—	—	—	—	●	●
Password		—	—	—	—	—	—	—	●	—	●
Configurable input / output		●	●	●	●	—	—	—	●	●	●

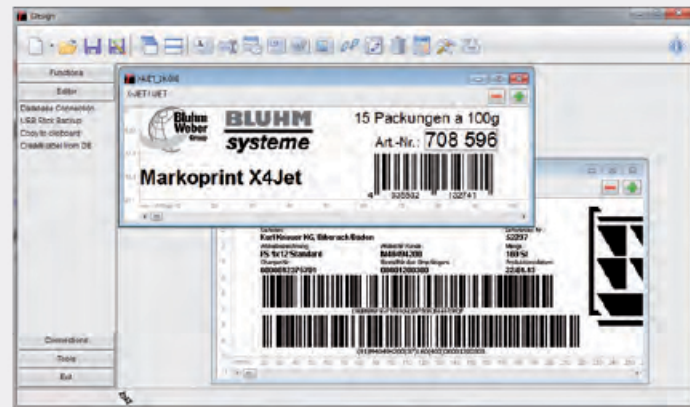
*at 300 dpi

Software for design and management of printed images

- Creating and administrating printed labels
- Ink consumption calculator
- Unicode support: Implementation of international symbol sets for global marking
- Clear display of all connected printing systems
- Unlimited number of administrated systems
- Control via Ethernet, USB or EIA232



Status



Printing layout design

- Start/stop of printing with database connectivity
- Status window with indication of all operational statuses via protocol function, e.g. ink levels / current printing label
- Working with overview of all running printing processes for one or more devices
- Set-up of printing parameters and configuration of printing systems
- Online administration of parameters for all networked systems
- Parameter backup
- Password protection / user administration incl. GAMP 5 regulations
- Optional: Touch optimized iDesign for touch screen IPCs

- Protocol function for user actions and operational statuses
- Transfer of external data, or triggering of active fields for fast and secure data transfer
- Print image change via XML or text files
- DB print for variable database printing at more than 3 000 printouts/min. of e.g. lottery codes or address labels



Parameters

First class **results** on virtually any **substrate**

